

Leading Light Wind



Leading Light Wind (LLW) Offshore Wind Lease OCS-A 0542

LLW secured lease OCS-A 0542 in 2022 and **was awarded a 2,400-megawatt contract in January 2024 by the New Jersey Board of Public Utilities**. The ~84,000-acre lease is located approximately 40 nautical miles east of Atlantic City, NJ and 75 nautical miles south of Long Island, NY.

Leading Light Wind (OCS-A 0542) Approximate Offshore Lease Boundaries						
Corner	DMS		DDM		DD	
NW	39°25'47.88"N	73°27'8.64"W	39°25.798°N	73°27.144°W	39.4297	-73.4524
NE	39°23'43.08"N	73°18'49.68"W	39°23.718°N	73°18.828°W	39.3953	-73.3138
SE	39°11'30.84"N	73°27'27.36"W	39°11.514°N	73°27.457°W	39.1919	-73.4576
SW	39°11'38.04"N	73°37'27.48"W	39°11.634°N	73°37.458°W	39.1939	-73.6243

Ongoing Seabed Characterization & Avian Surveys

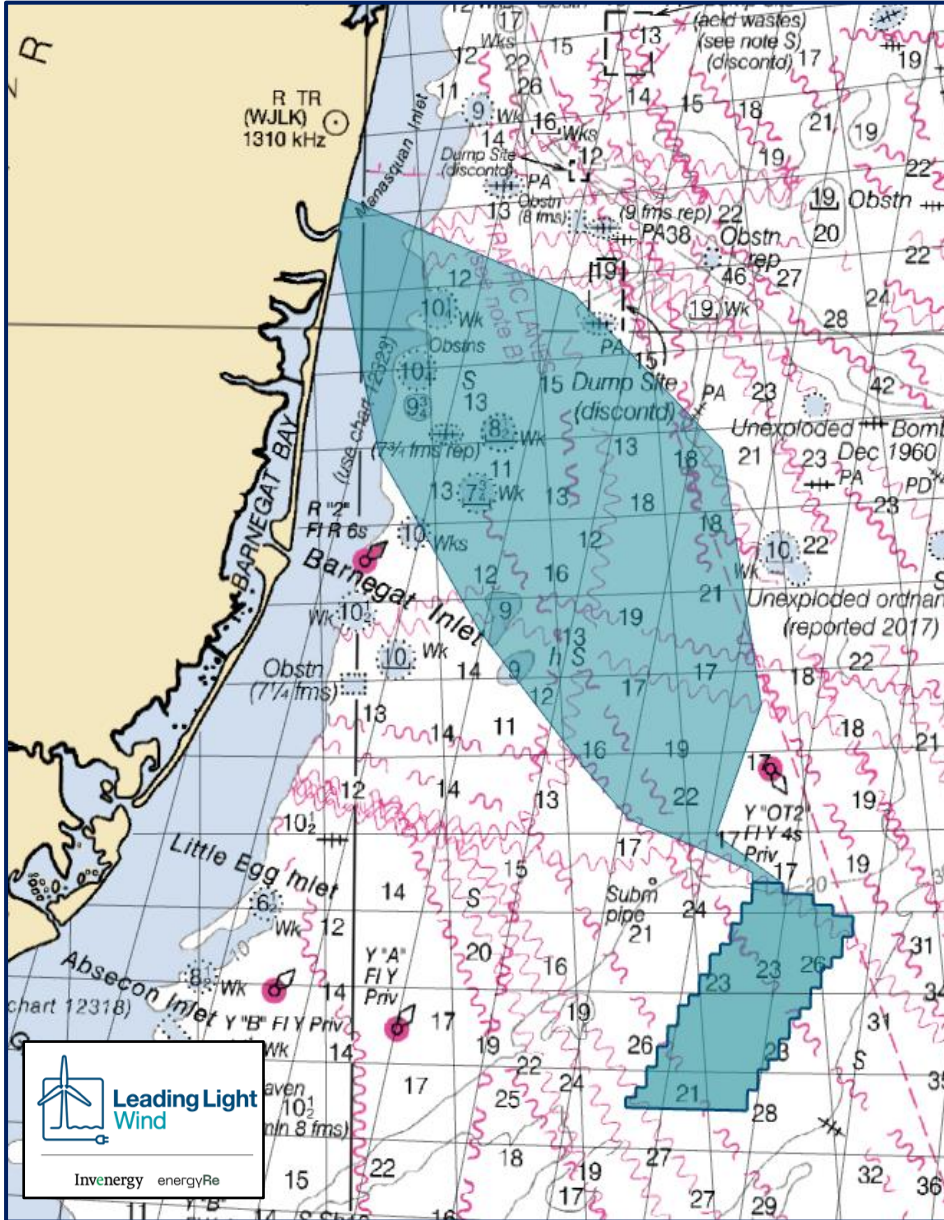
Mariners are advised of the ongoing and upcoming surveys for the Leading Light Wind project. These surveys will be used to inform project design and establish baseline characterizations.

- The **RV FUGRO EXPLORER** will continue to conduct geotechnical survey operations from late April to early July along potential export cable corridors in federal waters. The vessel will not utilize towed gear or sound sources.
- The **MV GO PURSUIT** will perform geophysical survey in federal waters along potential export cable corridors from early May to early July; these activities will involve towed survey equipment.
- The **RV SHEARWATER** plans to conduct geotechnical survey operations in early summer along potential export cable corridors in state and federal waters. The vessel will not utilize towed gear or sound sources.
- Avian surveys aboard the **ATLANTIC PEARL** will continue 3x per season (24-hr deployments) in the offshore lease through December 2024. These surveys do not involve any towed survey gear.

Protected Species Observers (PSOs) will be deployed onboard all survey vessels. The LLW Fisheries Team will provide fisheries briefings as appropriate to survey vessel crew and continue communications with the fishing community to help avoid and/or minimize the potential for interactions with fishing operations and/or gear. Scout vessels will be deployed as necessary. Survey and scout vessels can be hailed directly via VHF (CH 16) or by contacting the fisheries team.

Project Survey Area and Vessels

Mariners transiting or fishing in the survey area are requested to give a wide berth to the survey vessels, which may have limited maneuverability while surveying. Mariners should operate in a manner that will not endanger themselves, the survey vessels, or its equipment; 0.5 NM clearance is requested.



RV FUGRO EXPLORER

-Call Sign: 3FEV9 -Flag: Panama
-MMSI: 357456000 -LOA: 261 ft
-IMO: 9208564 -Beam: 52 ft



MV GO PURSUIT

-Call Sign: WDH6498 -Flag: USA
-MMSI: 367191410 -LOA: 170 ft
-IMO: 9458884 -Beam: 36 ft



RV SHEARWATER

-Call Sign: WDF5838 -Flag: USA
-MMSI: 368528000 -LOA: 110 ft
-IMO: 8993966 -Beam: 39 ft



ATLANTIC PEARL

-Call Sign: WDK2882 -Flag: USA
-MMSI: 368039840 -LOA: 131 ft
-IMO: n/a -Beam: 26 ft

Contact Us

Leading Light Wind remains committed to maintaining communications with fishing communities and other mariners in the area via these periodic updates, dock visits, informational speaking engagements, and the additional information posted on [Mariners Page](#) on the [LLW website](#). Mariners are also encouraged to contact Leading Light Wind's Fisheries Liaisons with any specific questions about project activities in relation to fisheries.

Future Mariner Updates will be issued to provide information on planned and ongoing activities. Please consult the [Local Notice to Mariners for USCG Districts 1 and 5](#) for additional information on offshore activity and, as always, please adhere to the USCG Rules of the Road for mariners: <https://www.dco.uscg.mil/NavRules/>.

If you believe your fishing gear was lost or damaged as a result of LLW survey activities, please alert the project Fisheries Liaison and complete a Fishing Gear Damage or Loss claim form which can be found on the LLW Webpage: www.leadinglightwind.com/mariners.

Sarah Hudak

Fisheries Liaison (onshore)

919-302-8559

sarahhudak@leadinglightwind.com

Ron Larsen

Fisheries Liaison Support

570-242-5023

ronlarsen@searisksolutions.com

Additional project information is available on the LLW web page: www.leadinglightwind.com